

# AIR-DRIVEN DOUBLE DIAPHRAGM PUMPS

**4 GPM up to 255 GPM**  
(16,3 L/M - 965 L/M)

- **Lube-Free**
- **Non-Stall**
- **Low Air Usage**
- **Reliable**



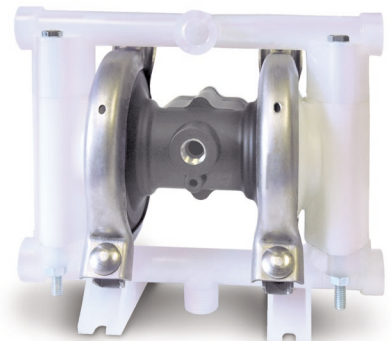
## Selection of materials:

- **Polypropylene** (1/4" - 2" models)
- **Nylon** (1/4" - 1" models)
- **Conductive Nylon** (1/4" - 1/2" models)
- **PVDF** (1/4" - 2" models)
- **Aluminum** (1/2" - 3" models)
- **316 Stainless Steel** (1/2" - 2" models)

Available in stock models built with application matched elastomers: Geolast® (Nitrile), Santoprene® (EPDM), PTFE, or Viton®

Santoprene® and Geolast® are registered trademarks of Advanced Elastomers Systems.  
Viton® is a registered trademark of DuPont Dow Elastomers.

**NEW**  
**December 2005**



## 3/8" Pump Specialty Performance

**Built for the really tough jobs...**

- Flow rate up to 9 GPM (34,1 LPM)
- High viscosity - up to 22,000 cps
- Fluids with solids up to 1/4" (6,4mm)
- Coagulating fluids - no problem
- Abrasive fluids - no problem
- Mounts in any position
- Suction Lift up to 17 feet (5,2m)
- Process Controls optional
- Dual/split manifolds factory option



**MAX-PASS™ Valve**

## PERFORMANCE FEATURES

### Process Controls Optional

- Cycle counters
- Solenoid control

### Drum Mounting Kits

- 1/4" - 1" pumps

### MAX-PASS™ Valve System

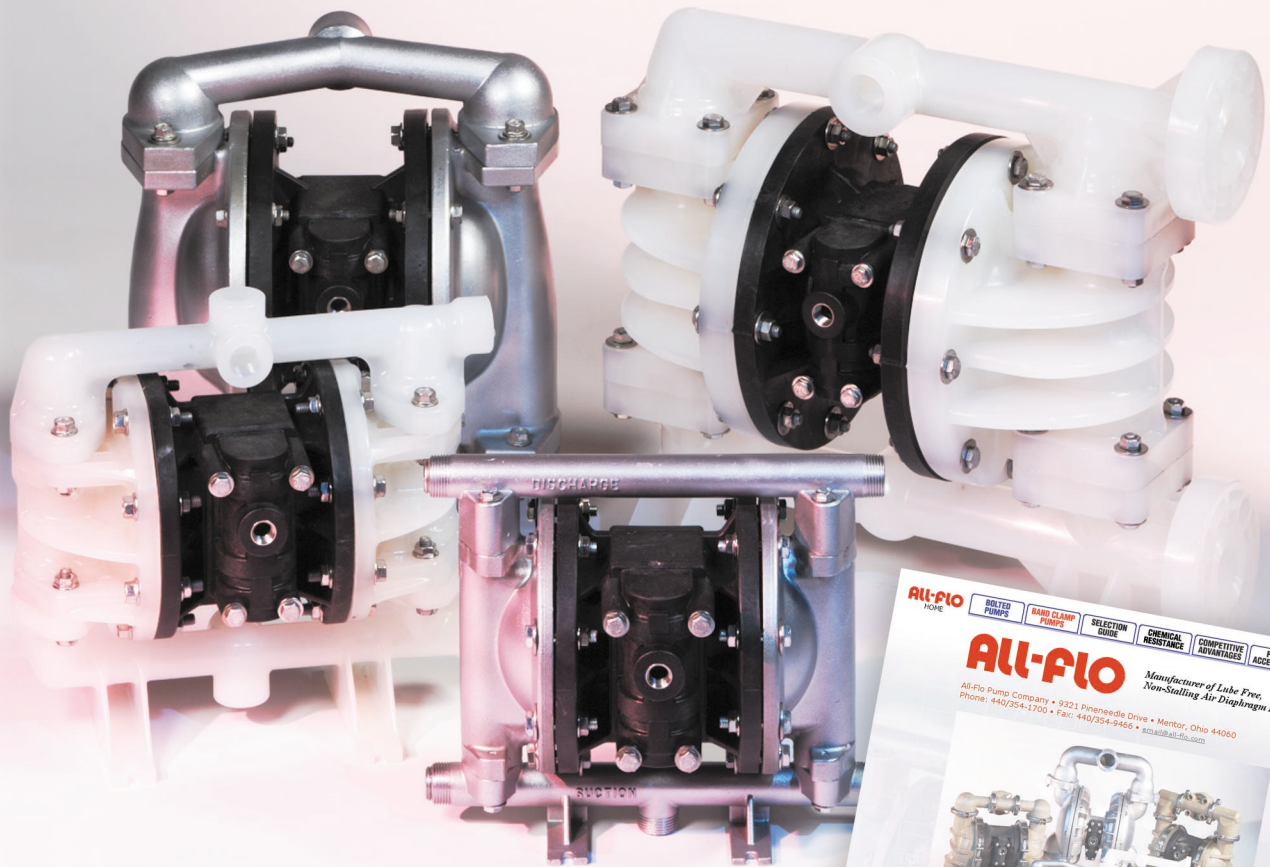
- Increase maximum passable solids by 300%
- Increase suction lift by 25%

# ALL-FLO

**"THE BEST DIAPHRAGM PUMPS IN THE WORLD"**

# Performance Plus

*Up to 120 psi maximum air pressure • Higher flow rates*



## ***Rapid Downloads***

**www.all-flo.com**

*Maintenance Instructions • Parts lists and specifications  
Drum pumps and accessories*

**ALL-FLO PUMP COMPANY, INC.**

9321 Pineneedle Drive • Mentor, Ohio 44060  
Phone: 440.354.1700 Fax: 440.354.9466

